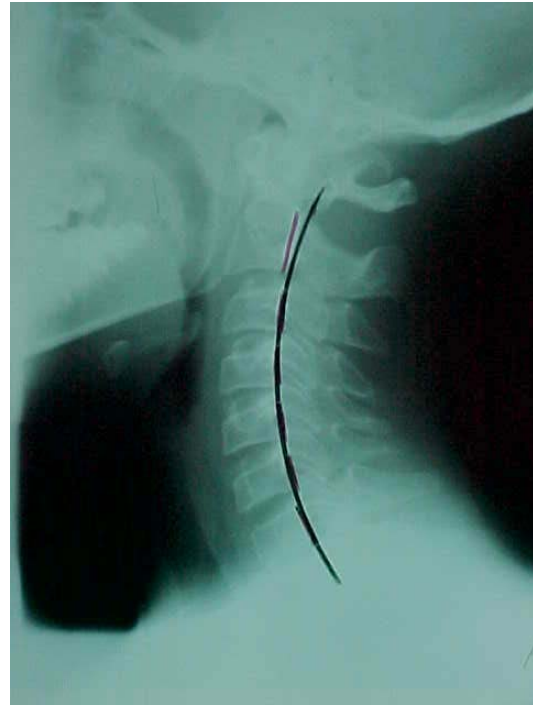
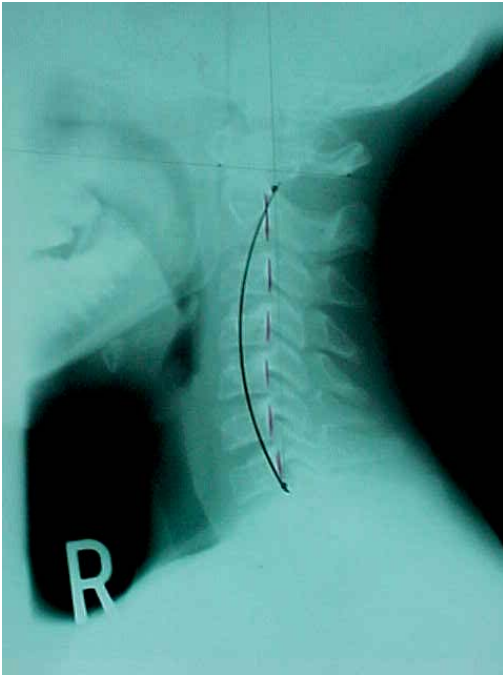


## Neck-Side View

The **black** line is normal spinal alignment.  
The **red** line is the patient's spinal alignment.

Before

After



This patient was a pre-teen that suffered from chronic migraine headaches. The “before” x-ray of the neck revealed a complete loss of the normal neck curve. The “after” x-ray reveals a 95% improvement of the neck curve. The migraines resolved.